



Spook Weekly Management Report W/C 01/02/2010  
for  
Spook Limited

## I. INTRODUCTION

Welcome to the Spook Weekly Management Report for Spook Limited. This report is designed to illustrate event activity and audit information regarding the Spook installation in the main server room and hosted server room over the given period.

### **Report Sections:**

**Floor Plans:** A Visio diagram of the installation showing sensor friendly names and positions of sensors.

**Contact Procedure:** The emergency contact procedure Spook will follow if an alarm condition is detected.

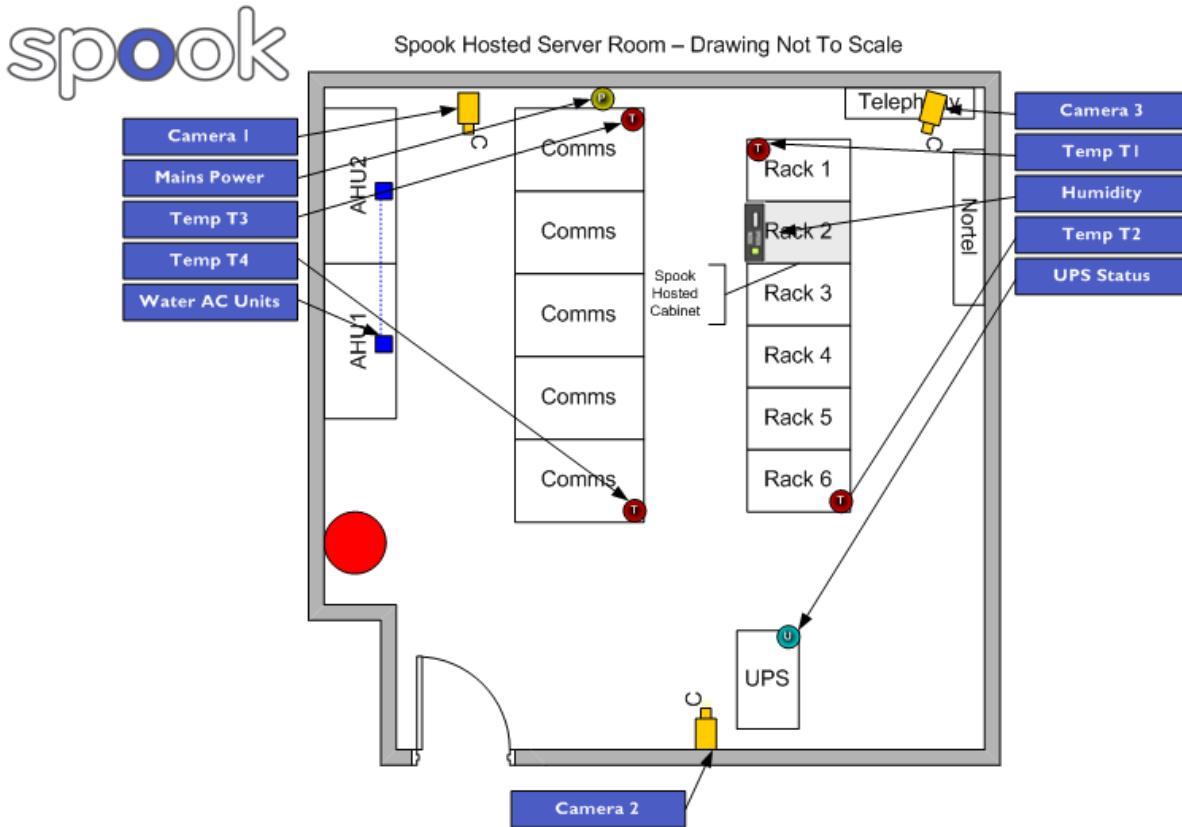
**Alarm Summary:** A table of any alarms received during the period, with a time and date stamp for each event.

**Sensor Charts:** Individual charts for each sensor over the given period.

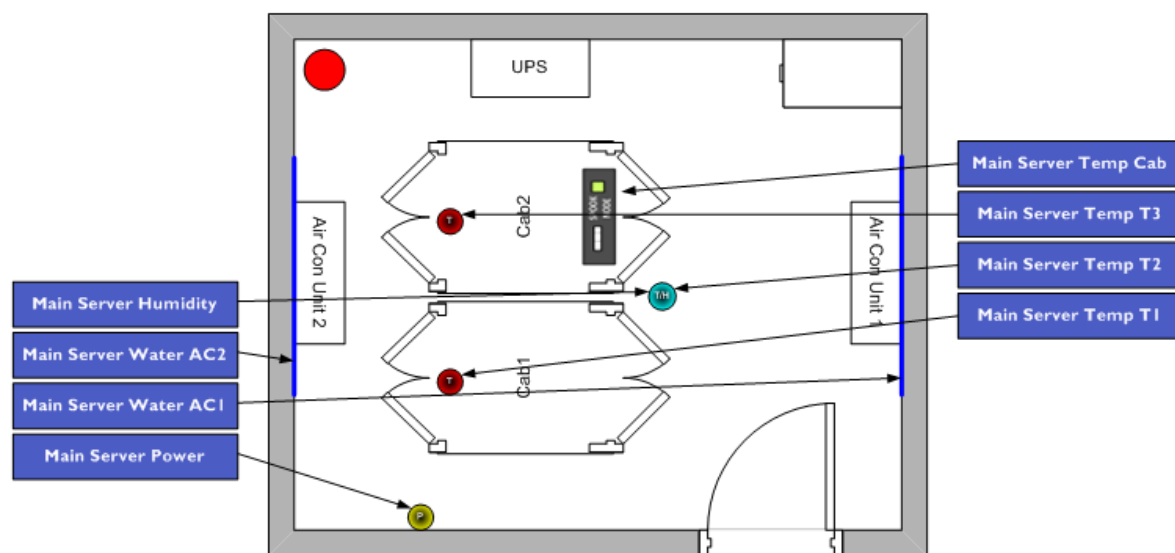
## 2. SPOOK INSTALLATION PLANS

Please find below the Spook Installation Plan(s) clearly showing each sensors friendly name and where the sensor is located. Should the installation change during the lifetime of the contract Spook will update this section accordingly.

### 2.01 Spook Hosted Server Room

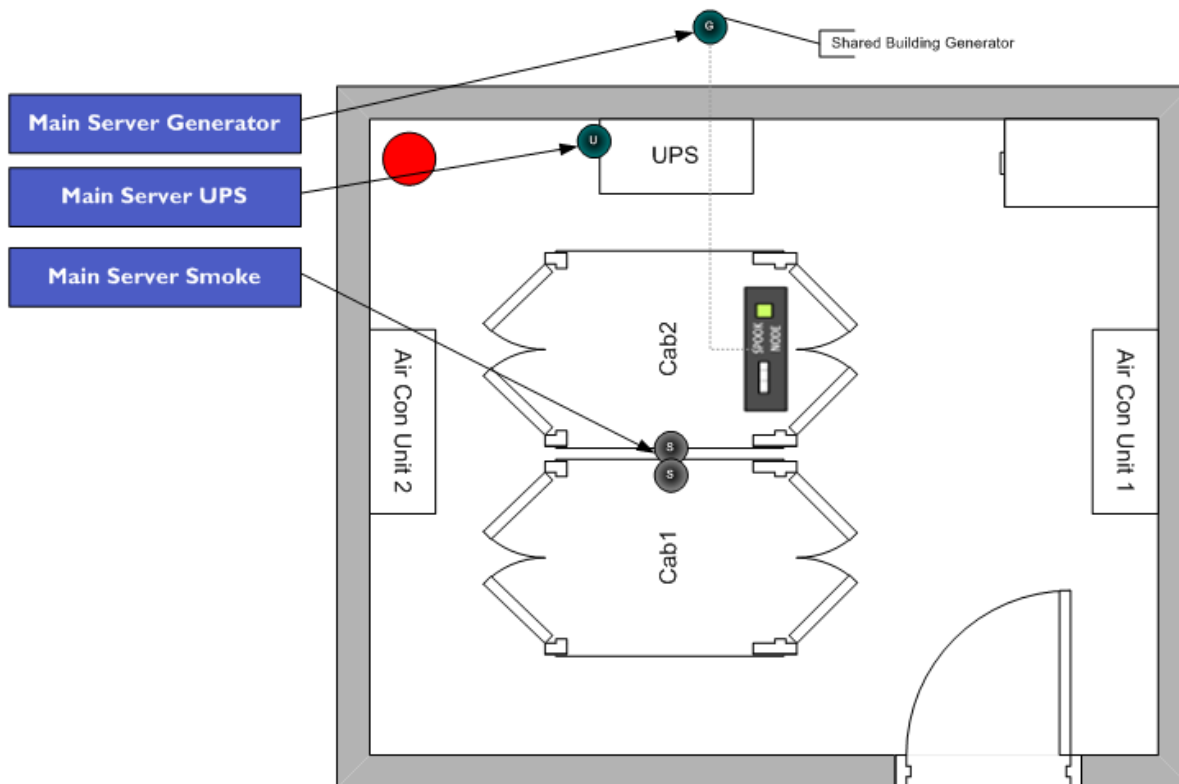


## 2.02 Spook Main Server Node I



Spook Limited Main Server Node 1 – Drawing Not To Scale

## 2.03 Spook Main Server Node 2



Spook Limited Main Server Node 2 – Drawing Not To Scale

### 3. SPOOK EMERGENCY CONTACT PROCEDURE

In the event of an alarm condition being detected the following procedure will be implemented.

#### 3.01 Escalation Process

| Alarm Stage 1<br>Time: 1 x full poll                      |                    |                                 |                                   |                    |                              |                                   |                       |                              |
|---|--------------------|---------------------------------|-----------------------------------|--------------------|------------------------------|-----------------------------------|-----------------------|------------------------------|
| Spook Console Audible Alarm<br>Spook Console Visual Alarm |                    |                                 |                                   |                    |                              |                                   |                       |                              |
| Alarm Stage 2<br>Time: 10 Minutes                         |                    |                                 | Alarm Stage 3<br>Time: 10 Minutes |                    |                              | Alarm Stage 4<br>Time: 10 Minutes |                       |                              |
| E-Mail<br>24/7  | SMS<br>24/7        | Telephone<br>All other<br>times | E-Mail<br>24/7                    | SMS<br>24/7        | Telephone<br>All other times | E-Mail<br>24/7                    | SMS<br>24/7           | Telephone<br>All other times |
| Andrew<br>des'Ascoyne                                     | Spook<br>Support01 | Spook Ltd                       | Andrew<br>des'Ascoyne             | Spook<br>Support01 | Spook Ltd                    | Andrew<br>des'Ascoyne             | Andrew<br>Des'Ascoyne | Spook Ltd                    |
| Martin<br>Luck  | Spook<br>Support02 |                                 | Martin<br>Luck                    | Spook<br>Support02 |                              | Martin<br>Luck                    | Martin<br>Luck        | Andrew<br>Des'Ascoyne        |
| Nick<br>Houghton  |                    |                                 | Nick<br>Houghton                  |                    |                              | Nick<br>Houghton                  | Spook<br>Support01    | Martin<br>Luck               |
|   |                    |                                 |                                   |                    |                              |                                   | Spook<br>Support02    | Nick<br>Houghton             |
| Spook Support 24/7  |                    |                                 | Spook Support 24/7                |                    |                              | Spook Support 24/7                |                       |                              |

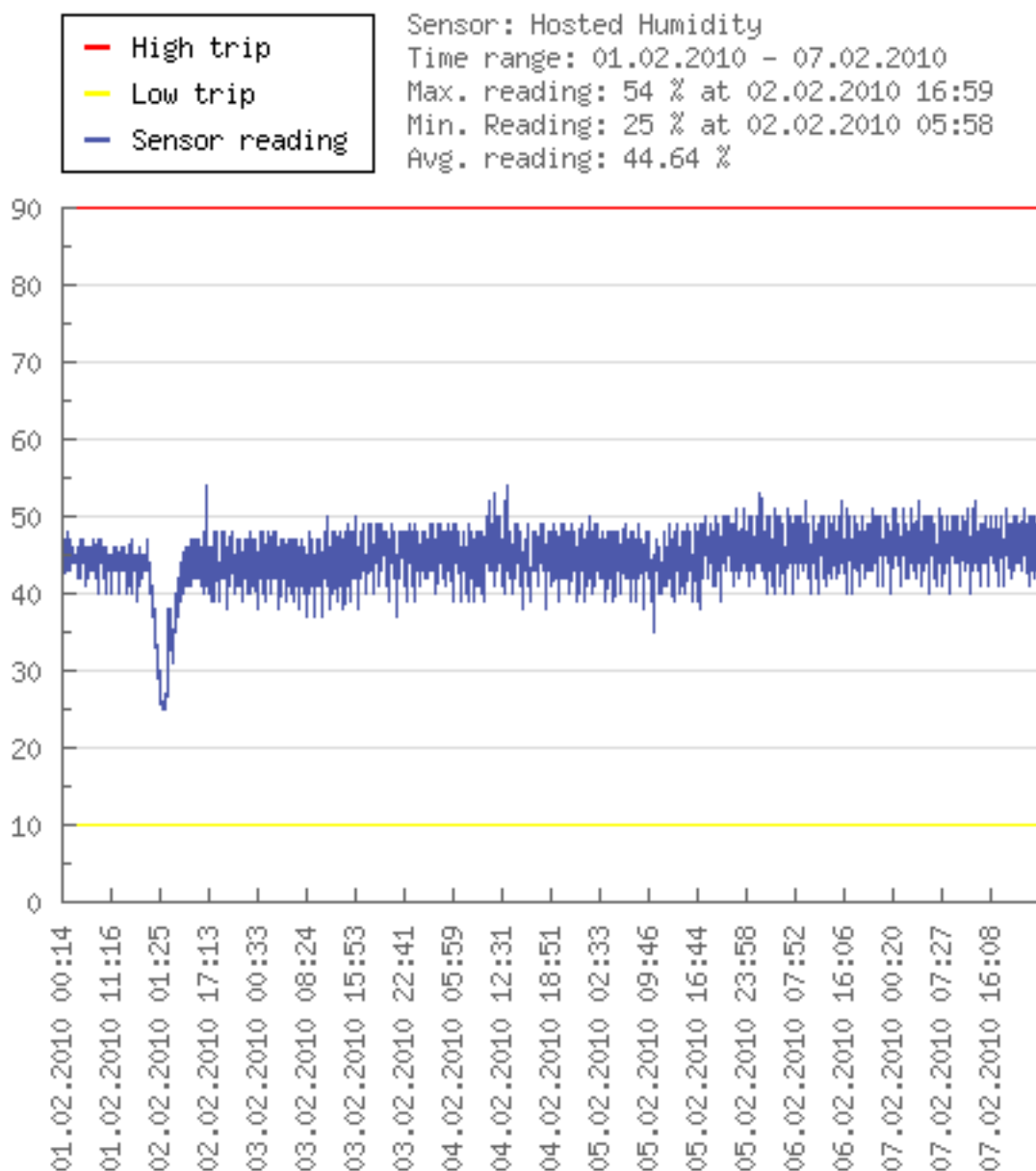
#### 4. SPOOK ALARM SUMMARY

If there has been any alarm activity during the week, this will be recorded in the table below. If there is no table, this is because there has been no record of any alarm conditions during the period.

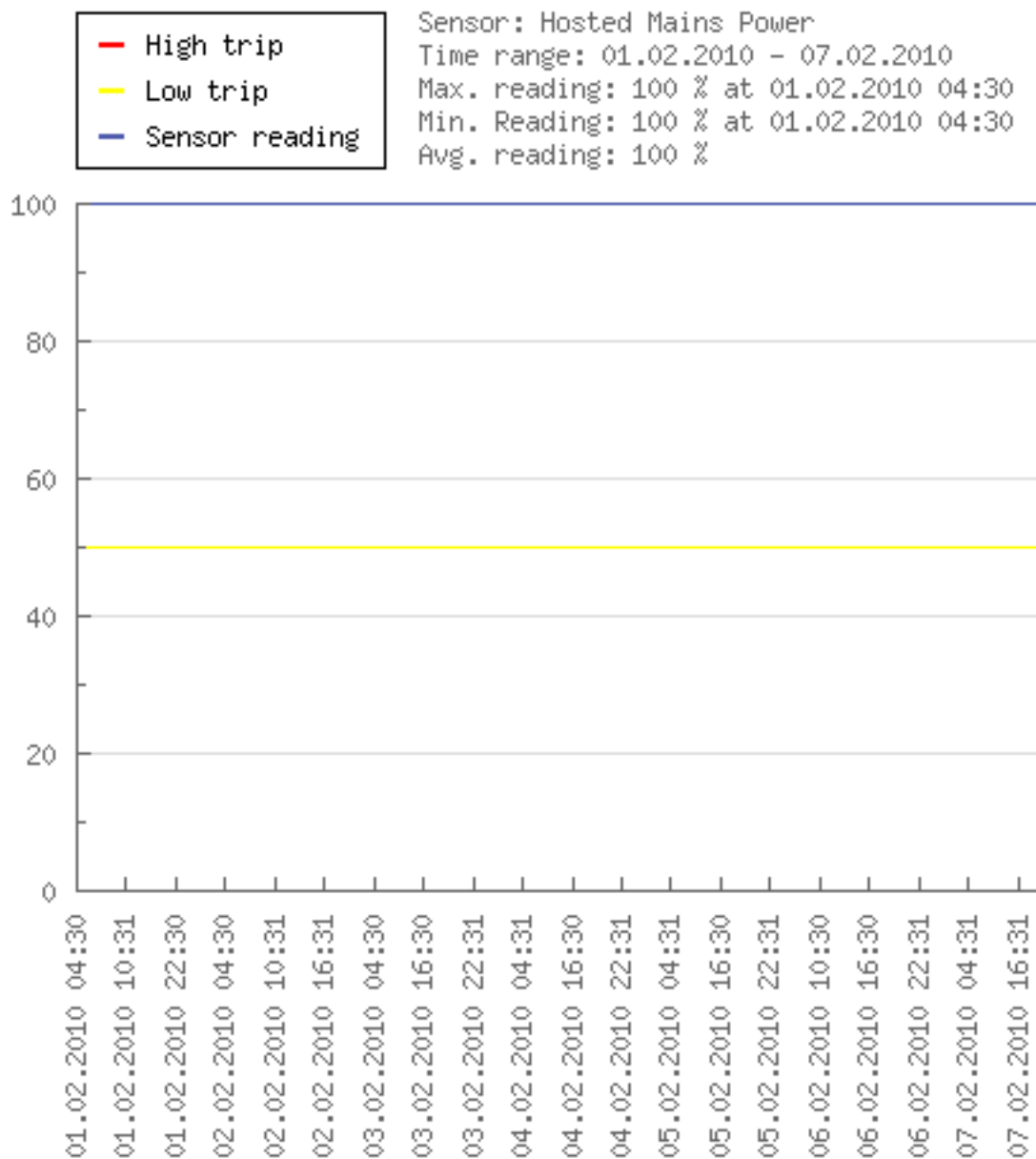
For Alarms during the period please review the individual Alarm Reports under My Incident Reports for a full audit of the incident.

## 5. SPOOK INDIVIDUAL SENSOR CHARTS

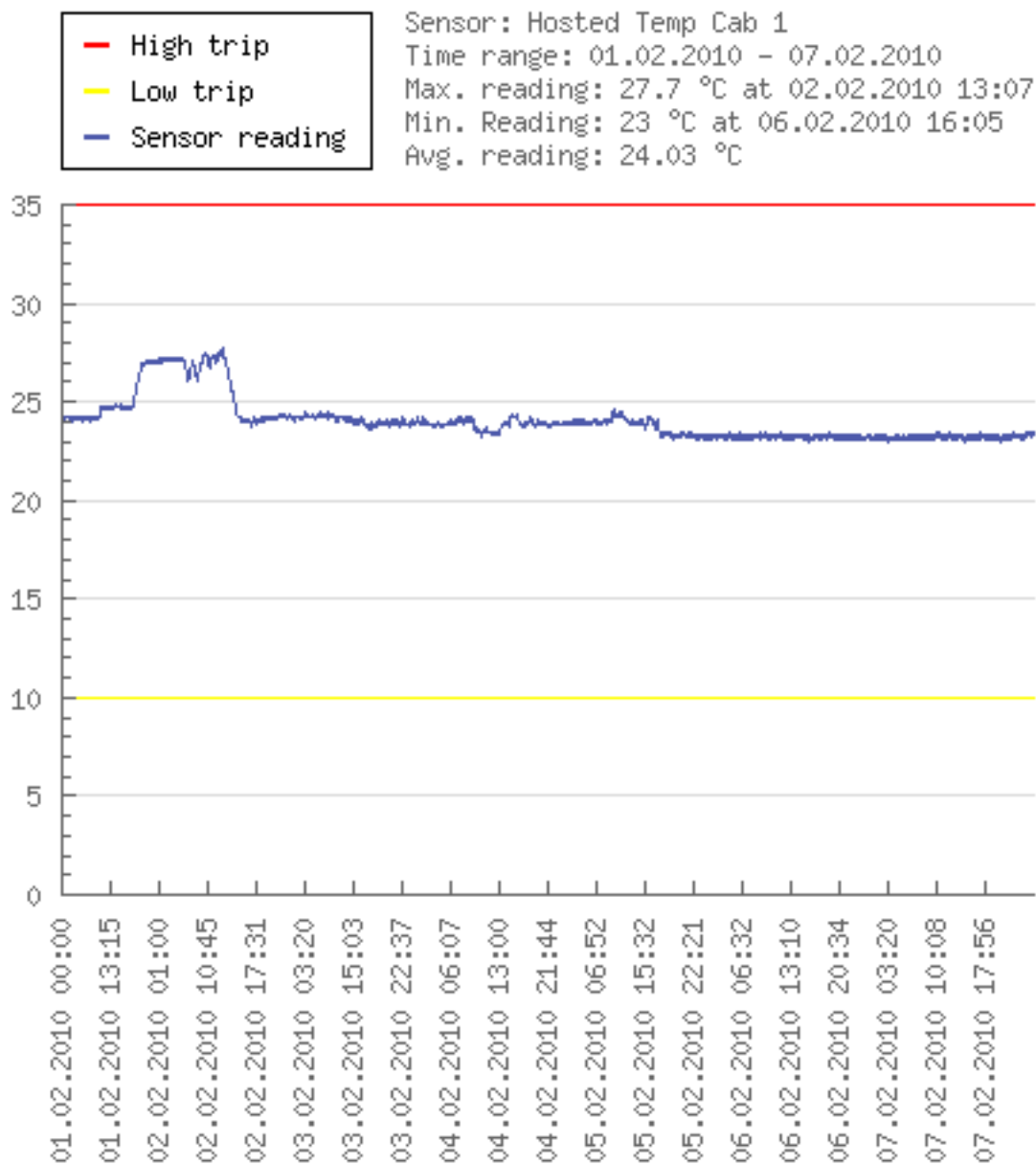
### 5.01 Hosted Humidity



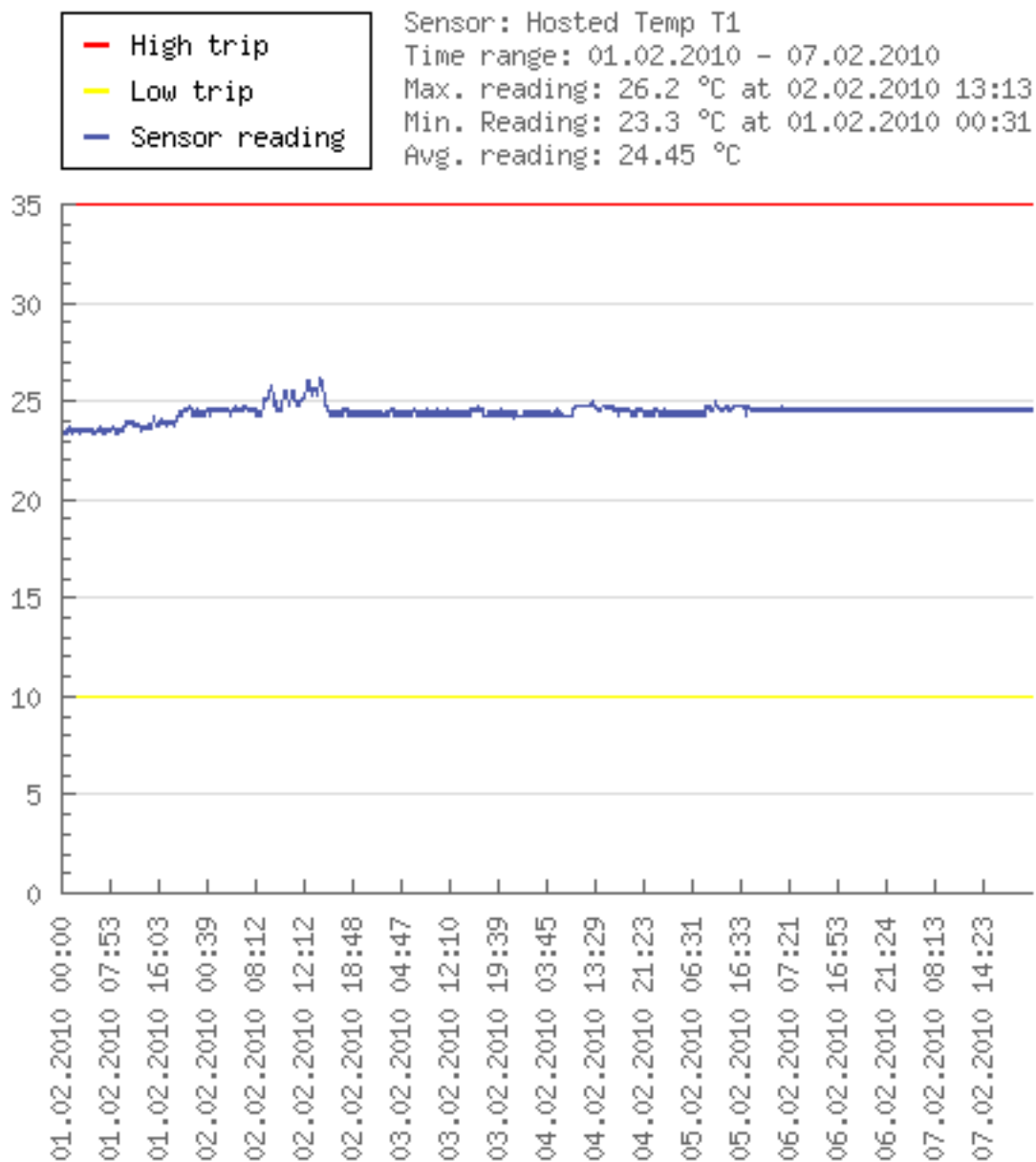
## 5.02 Hosted Mains Power



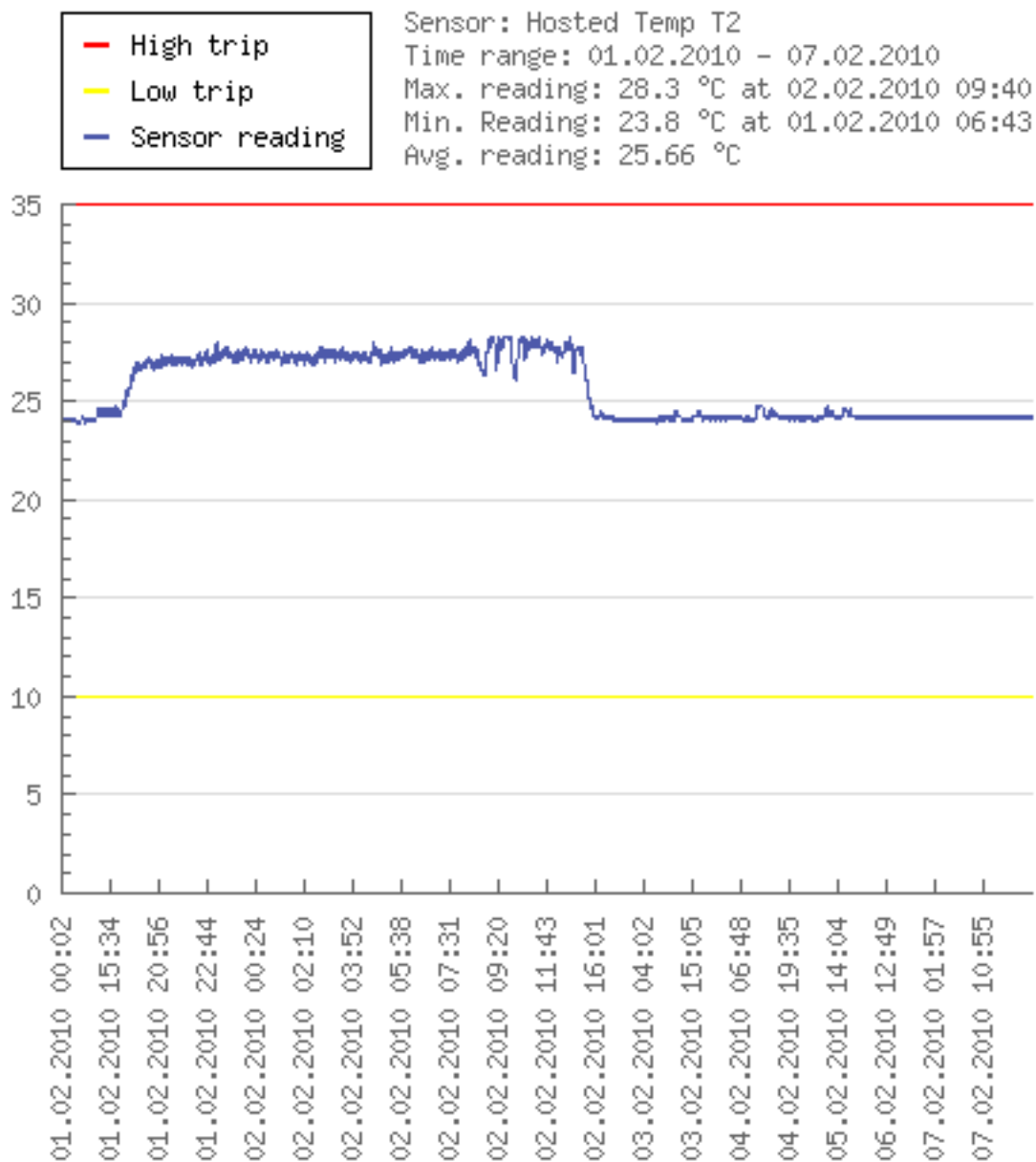
## 5.03 Hosted Temp Cab I



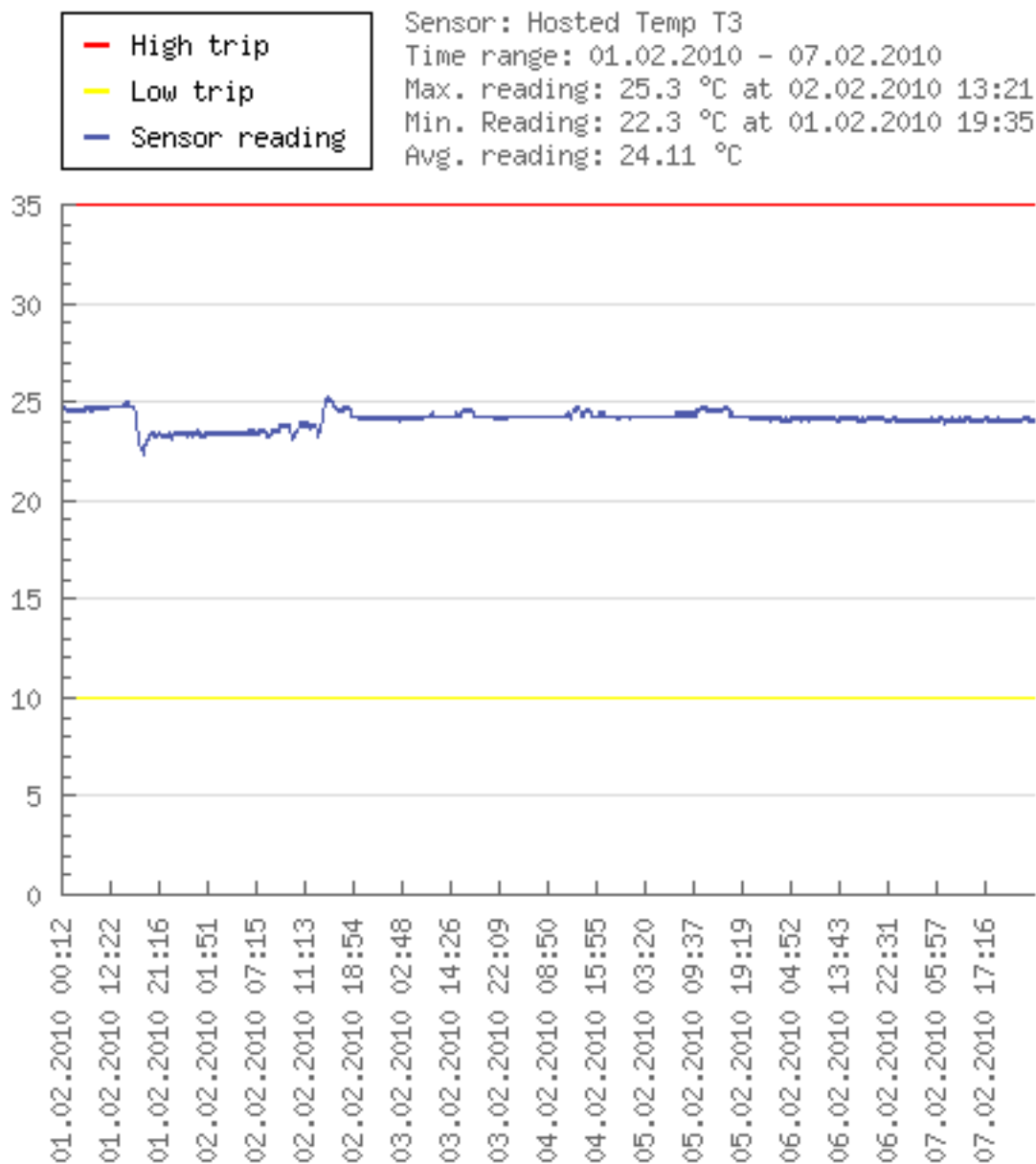
## 5.04 Hosted Temp T1



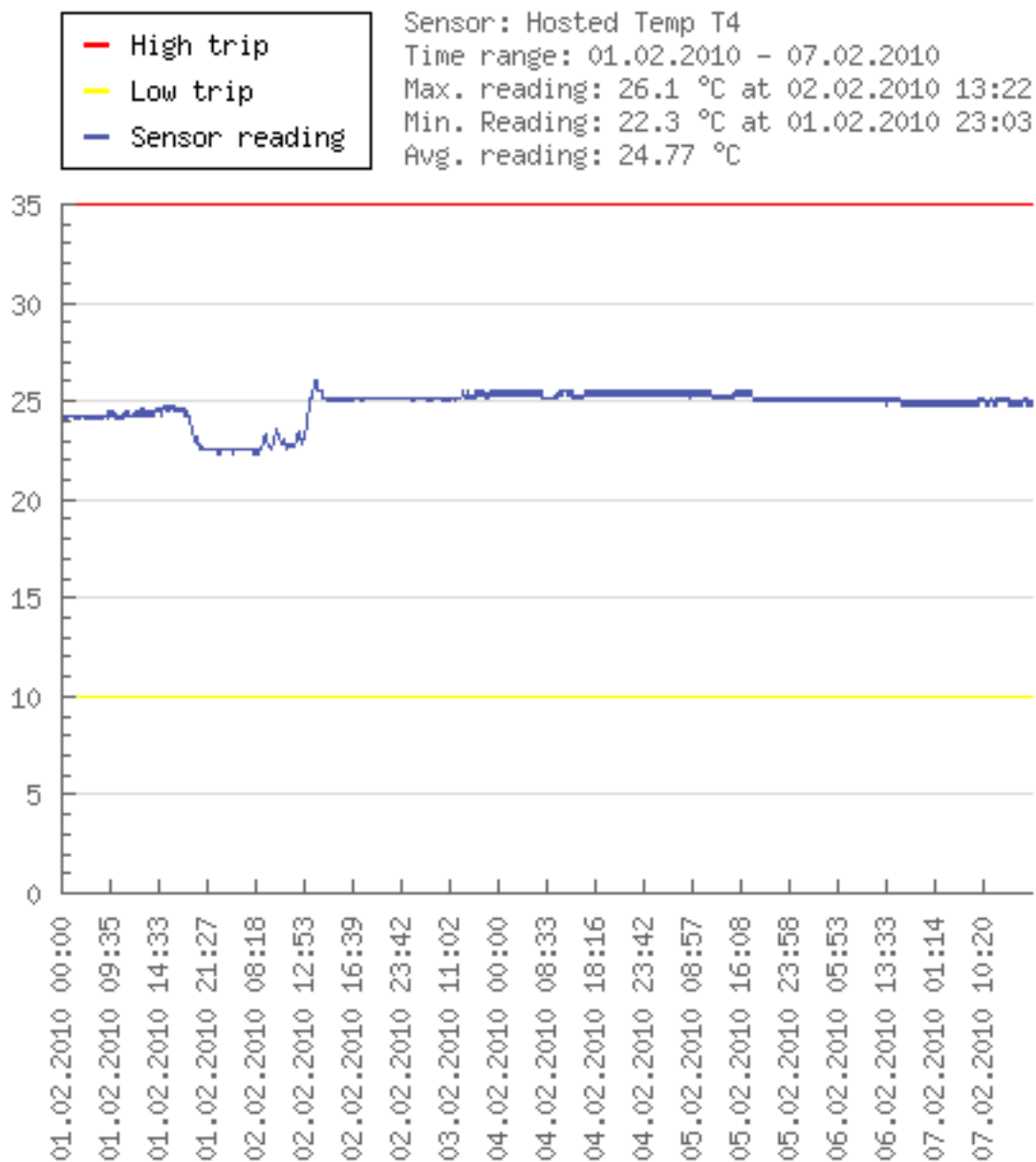
## 5.05 Hosted Temp T2



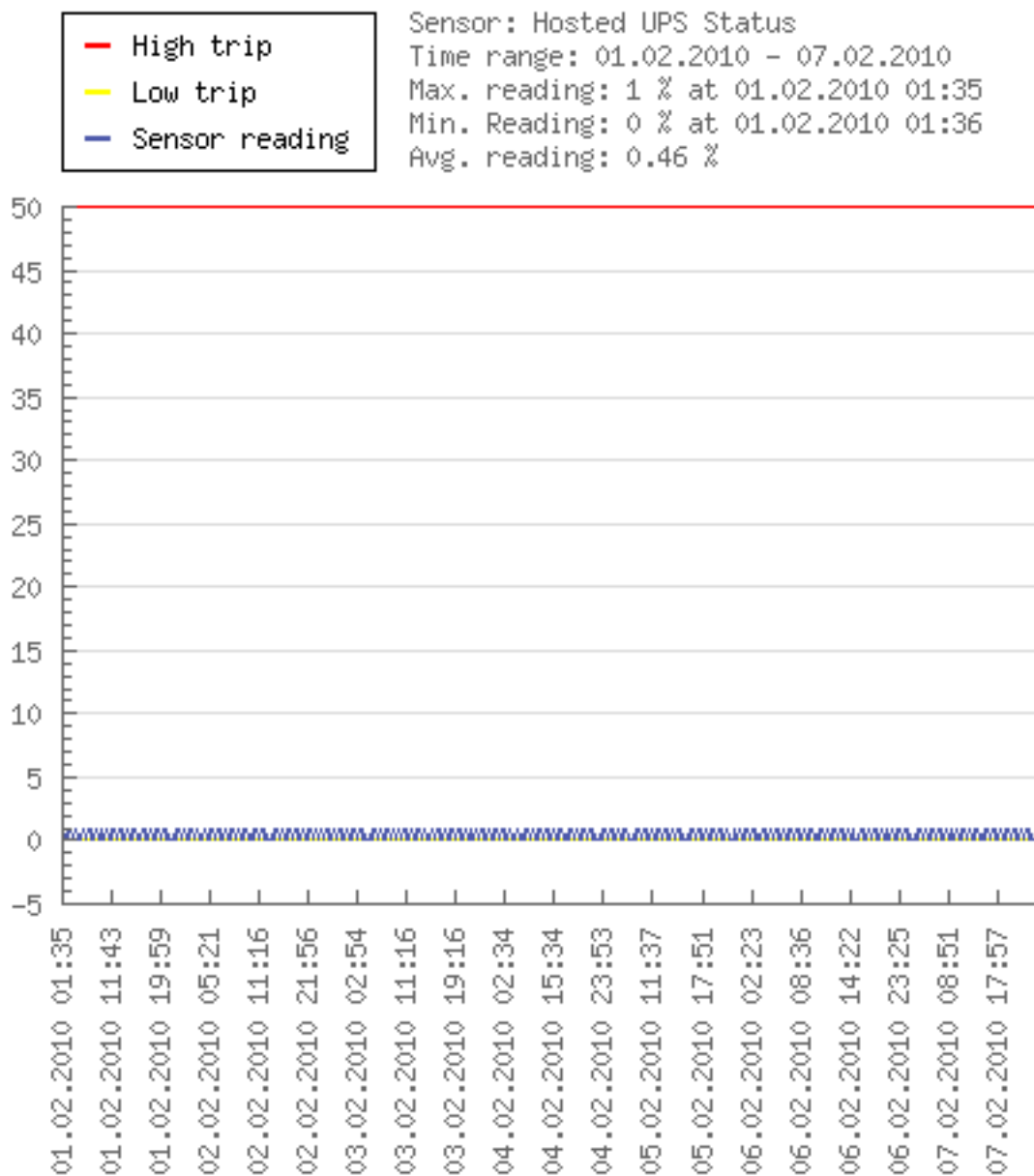
## 5.06 Hosted Temp T3



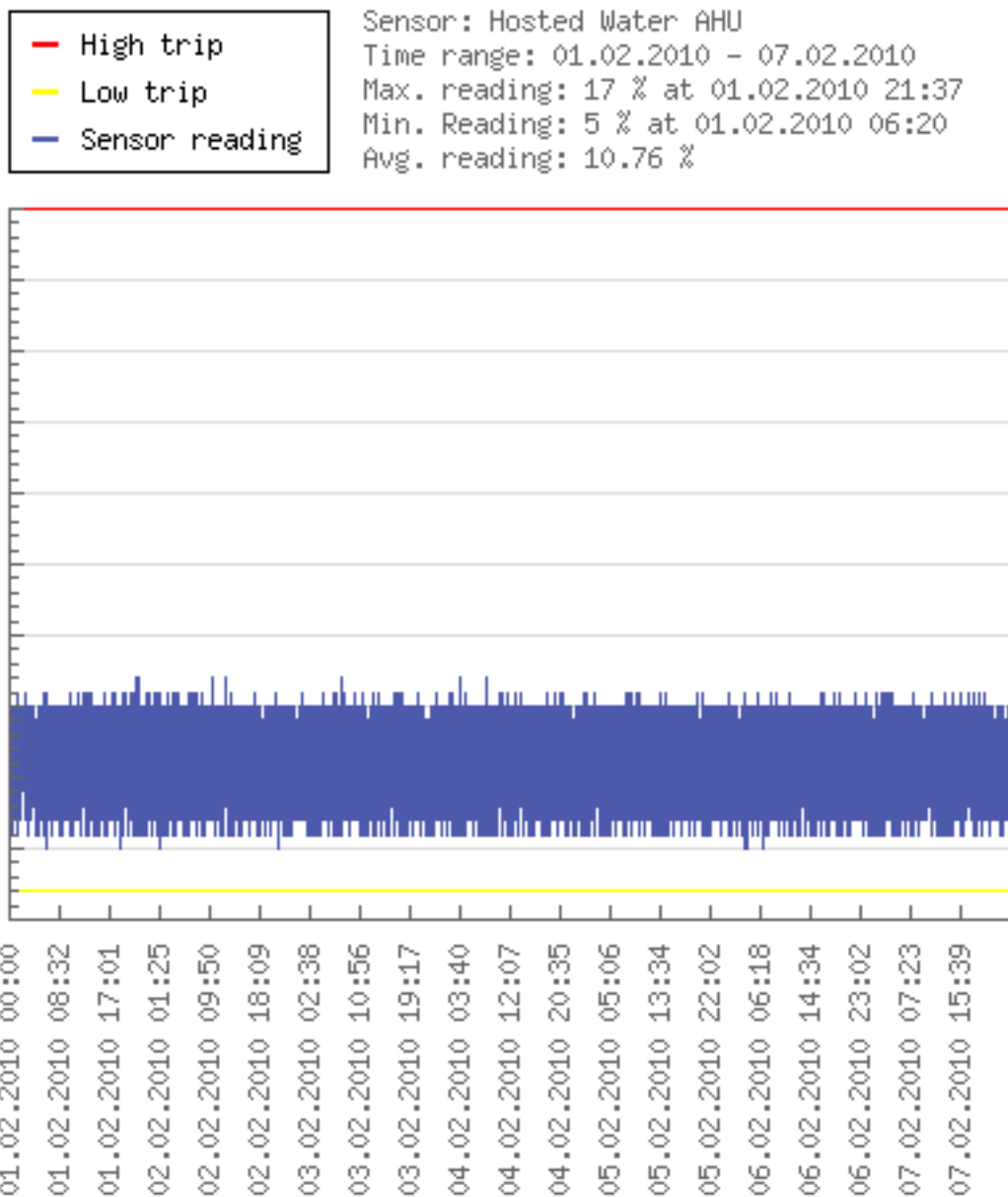
## 5.07 Hosted Temp T4



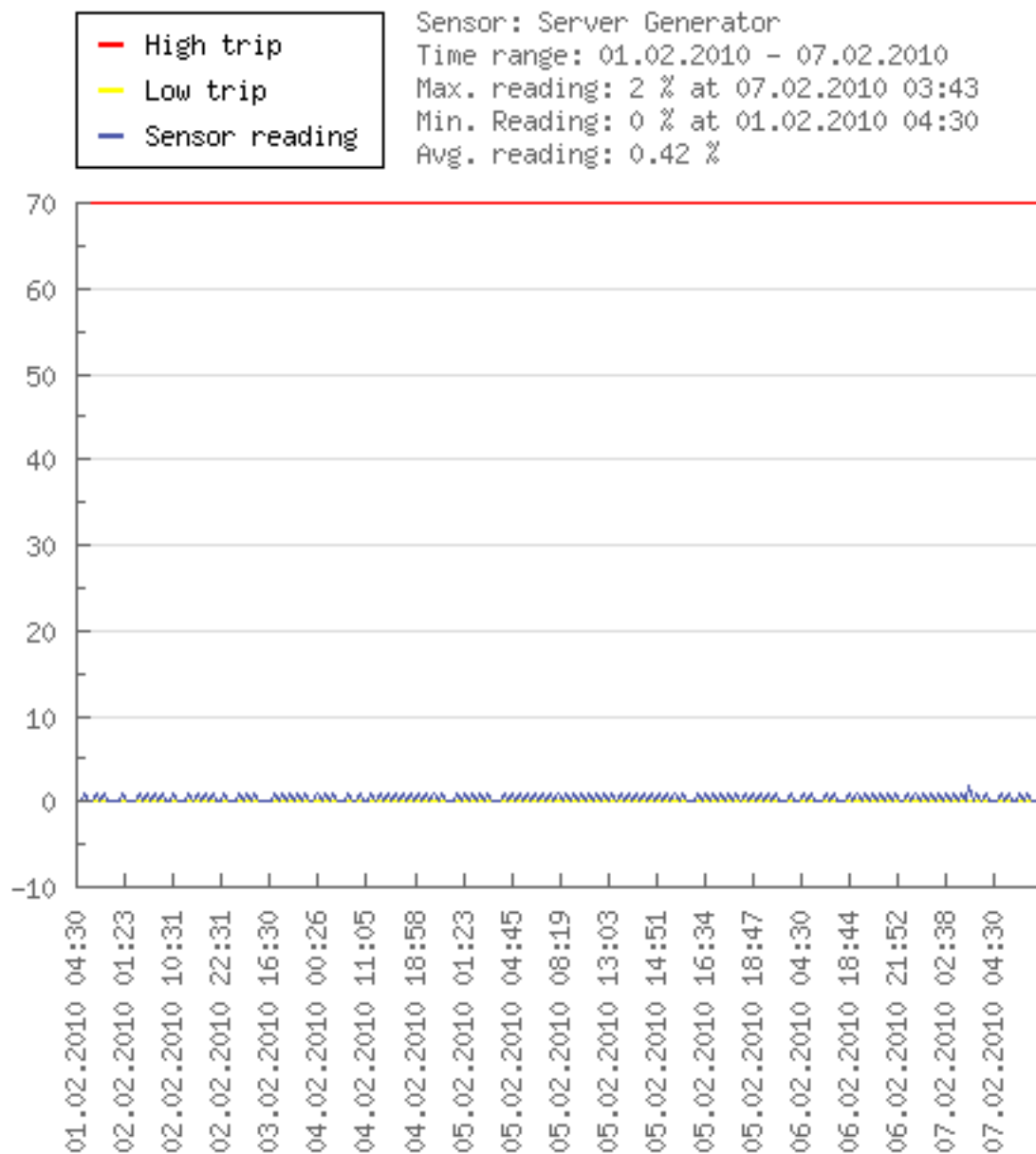
## 5.08 Hosted UPS Status



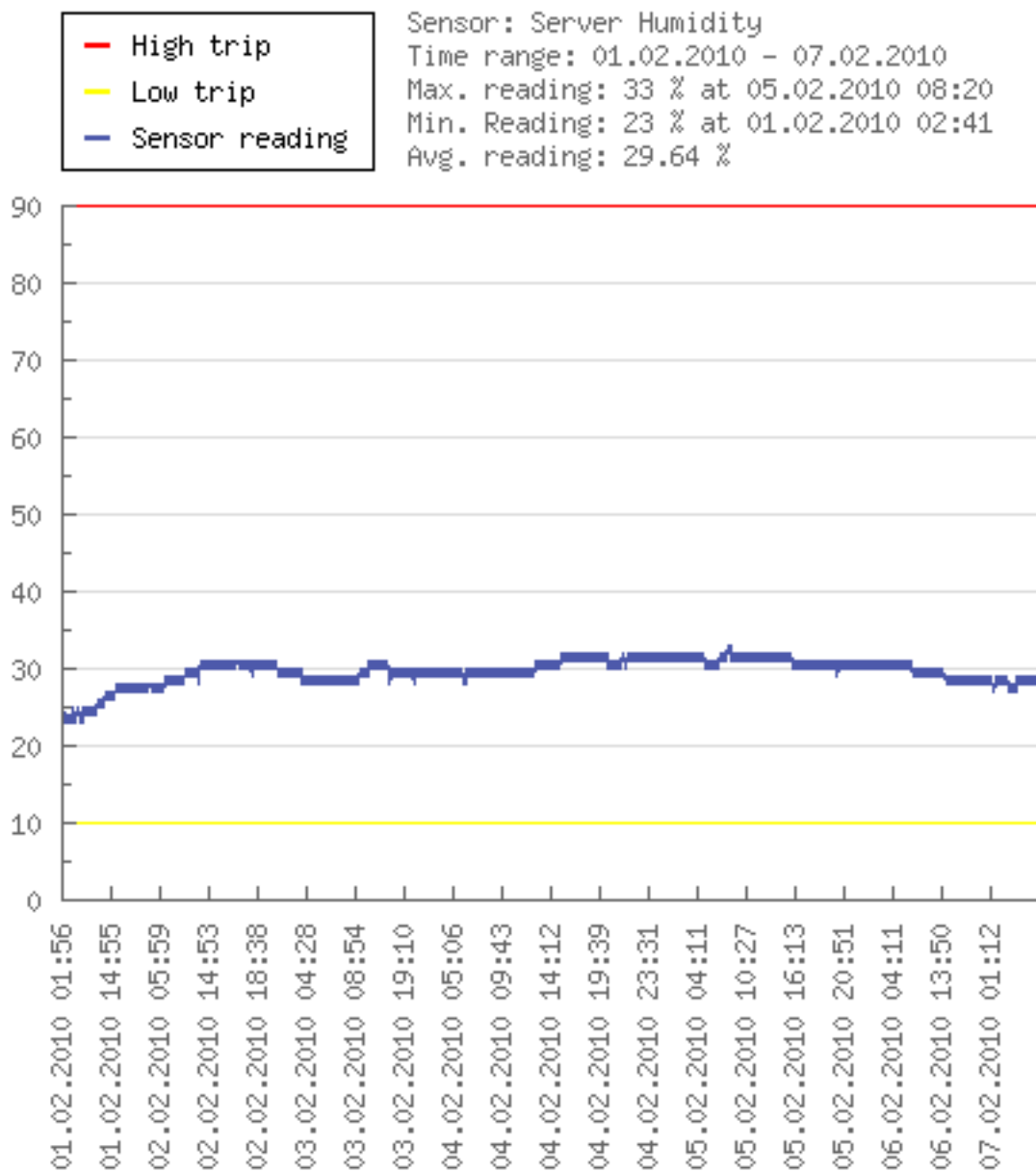
## 5.09 Hosted Water AHU



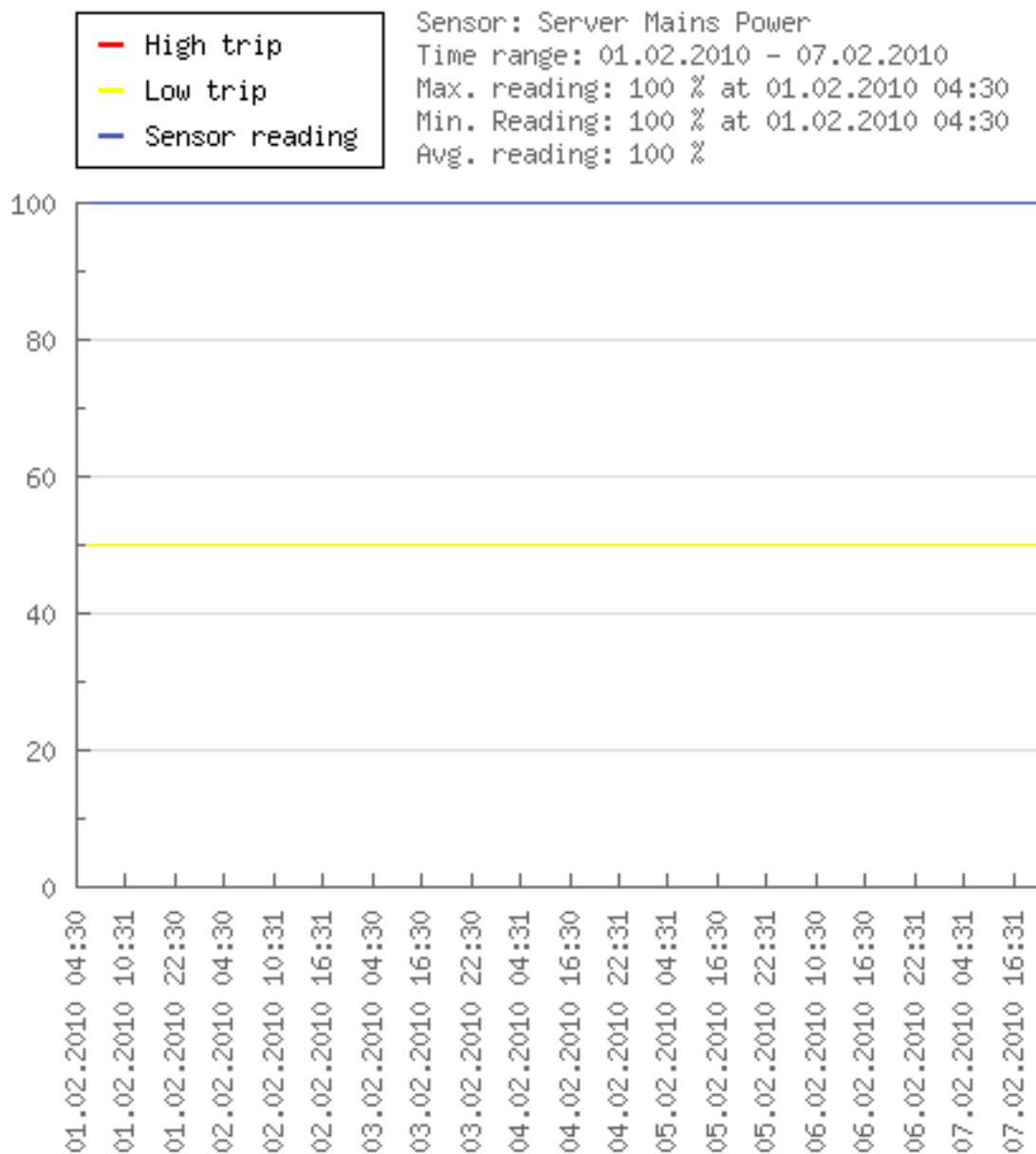
## 5.1 Server Generator



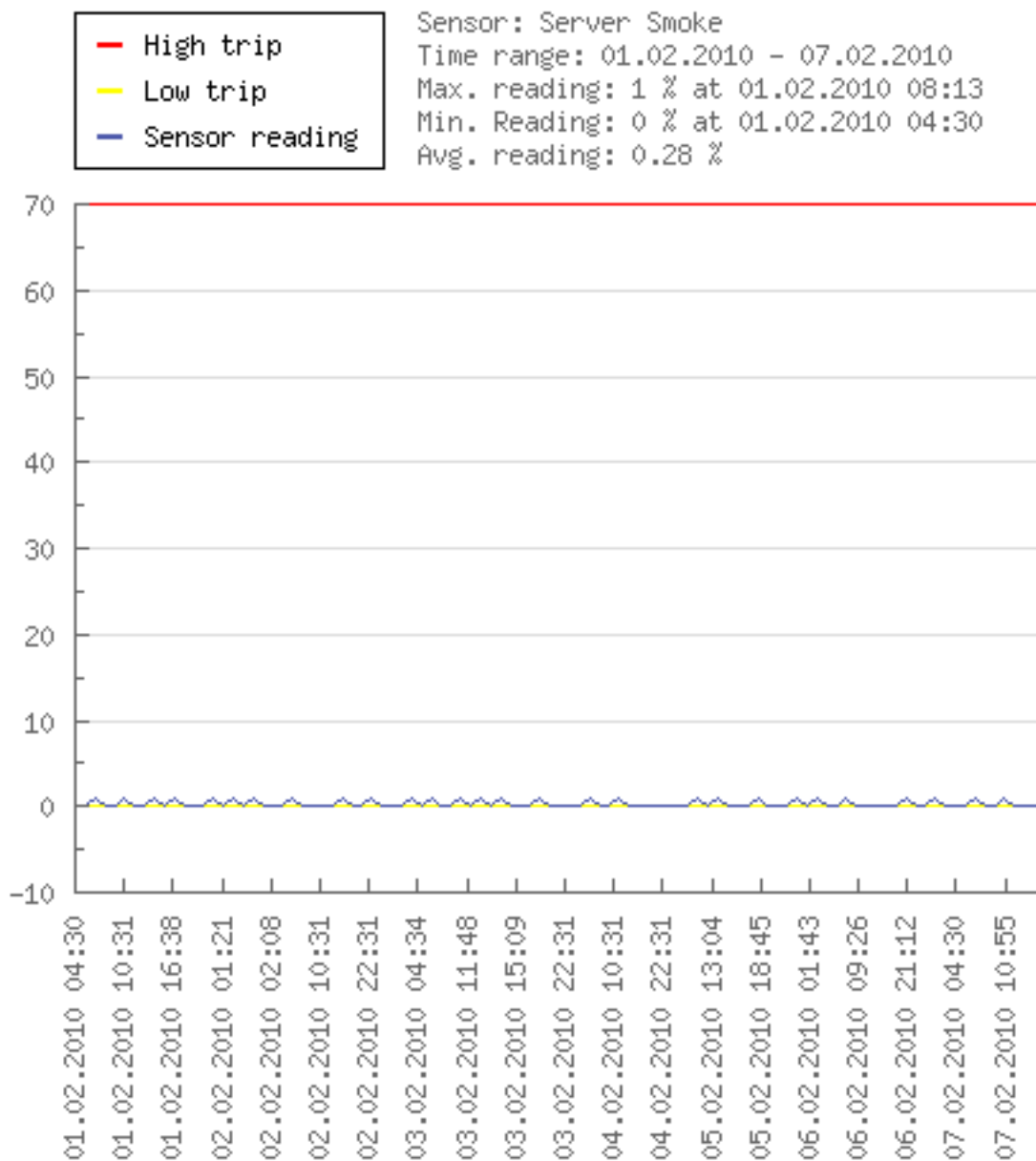
## 5.11 Server Humidity



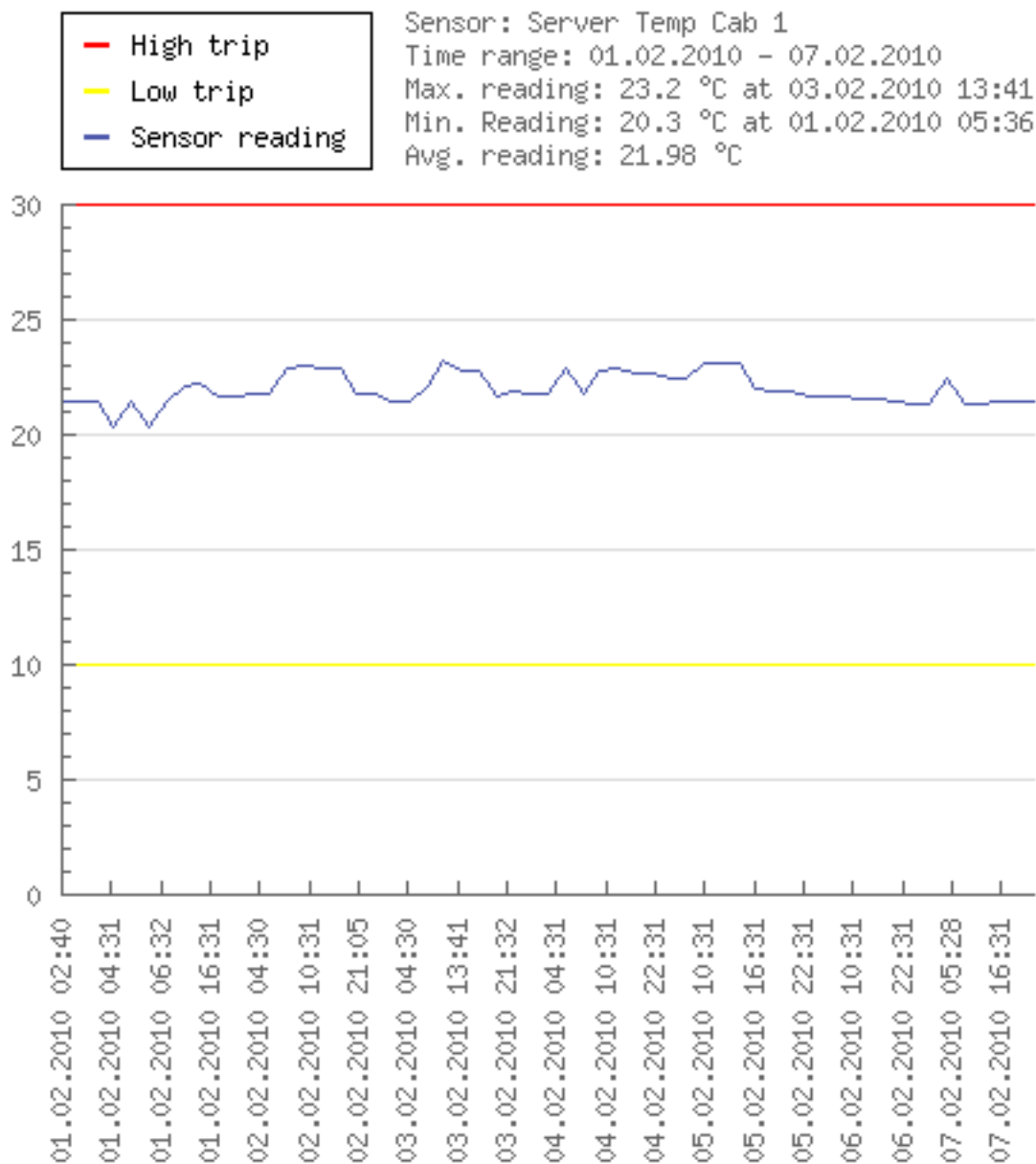
## 5.12 Server Mains Power



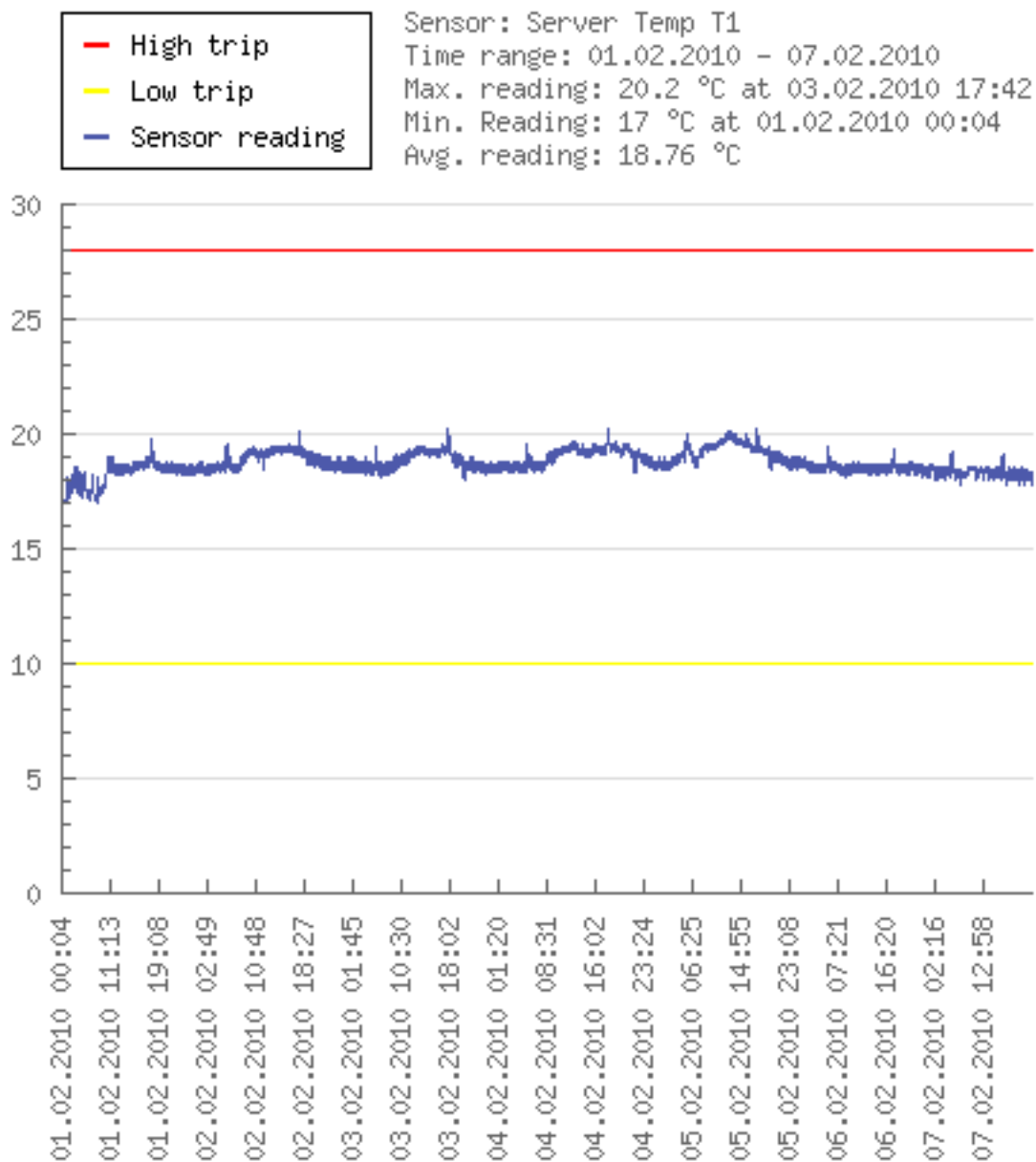
## 5.13 Server Smoke



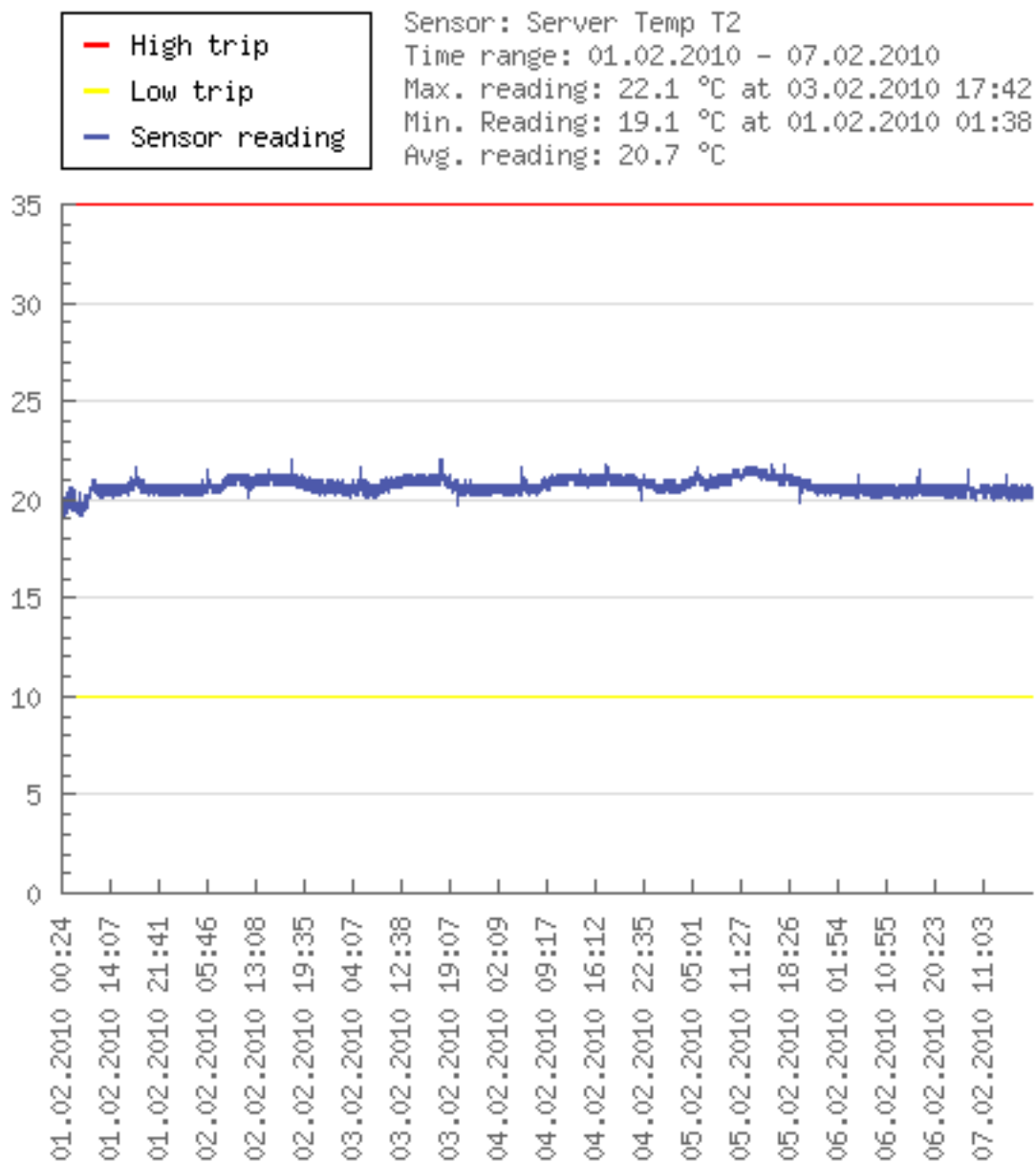
## 5.14 Server Temp Cab I



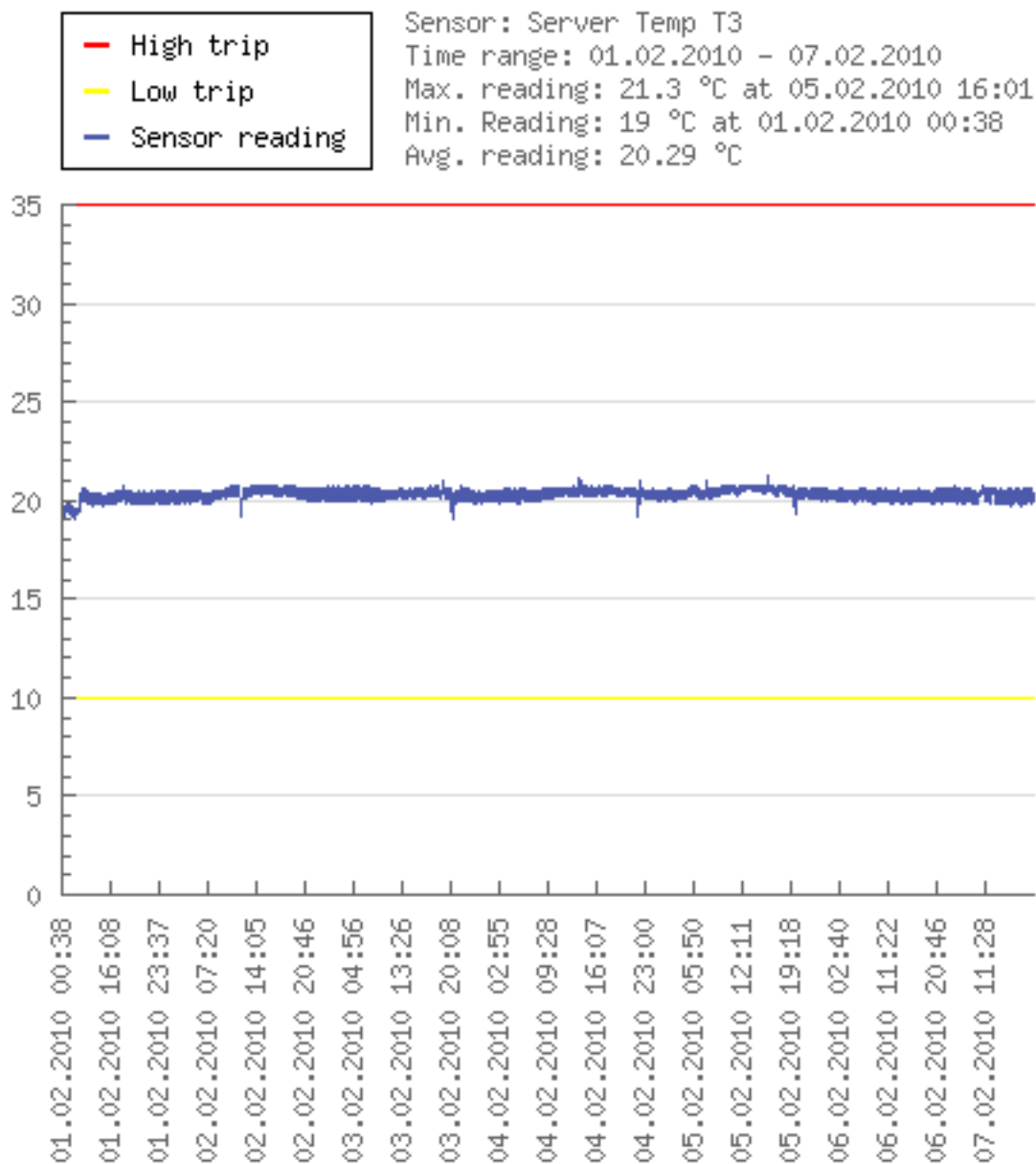
## 5.15 Server Temp T1



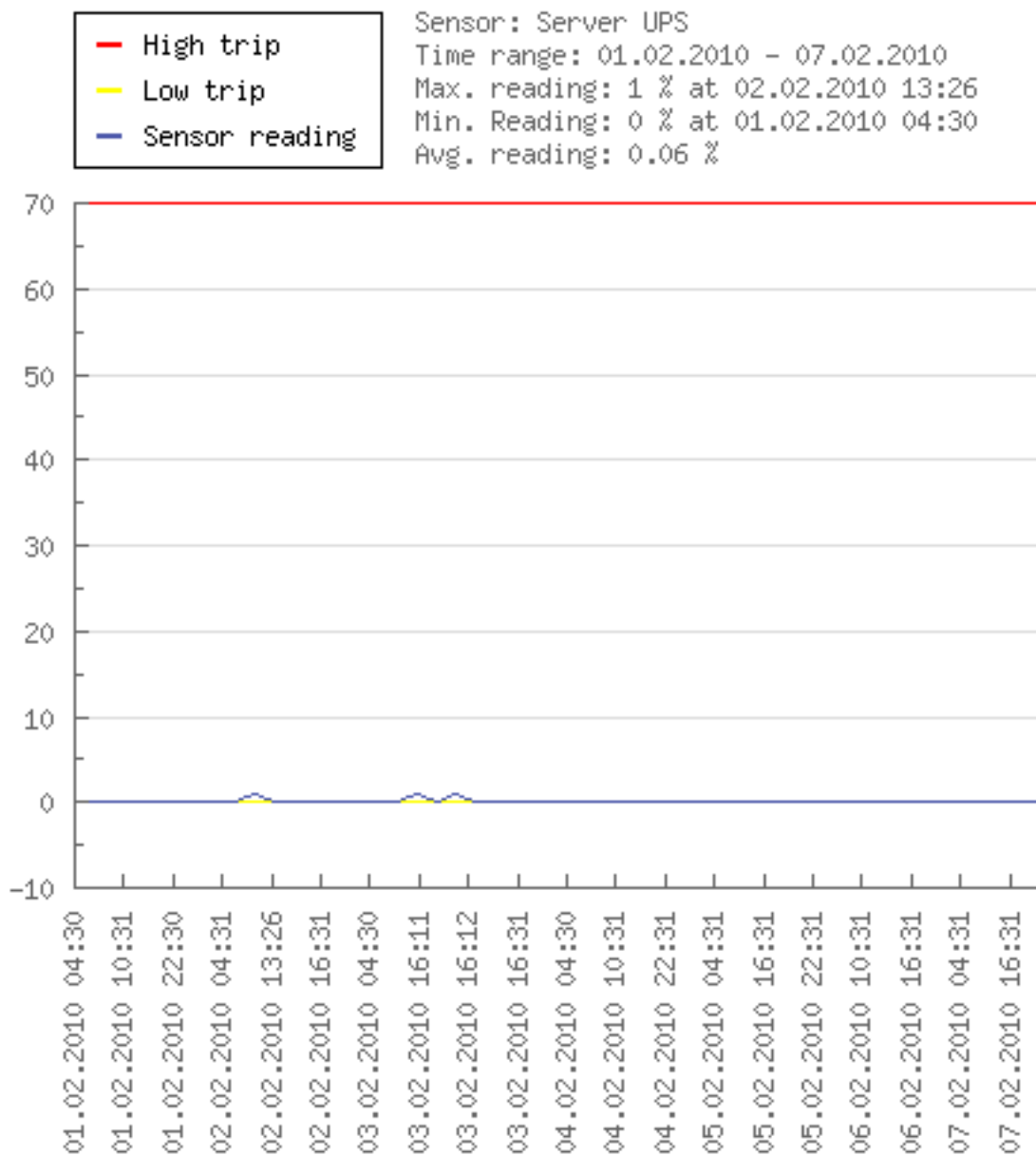
## 5.16 Server Temp T2



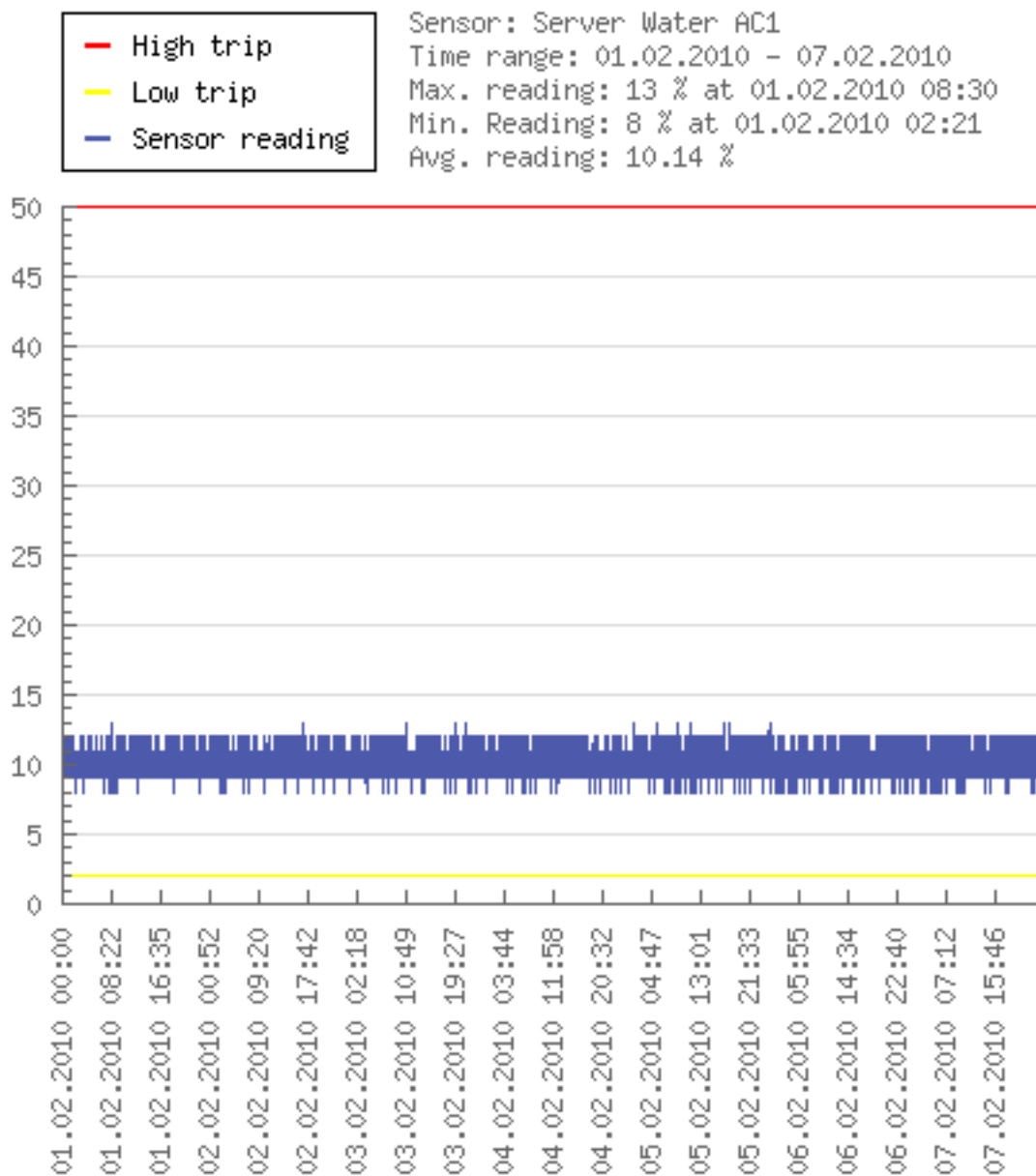
## 5.17 Server Temp T3



## 5.18 Server UPS



## 5.19 Server Water AC1



## 5.2 Server Water AC2

