

Create your "search" mask

Please complete the compulsory fields marked with an asterisk [*].

Node location: **Node Location**

Sensor name: **Sensor**

Period begin: **Start Date**

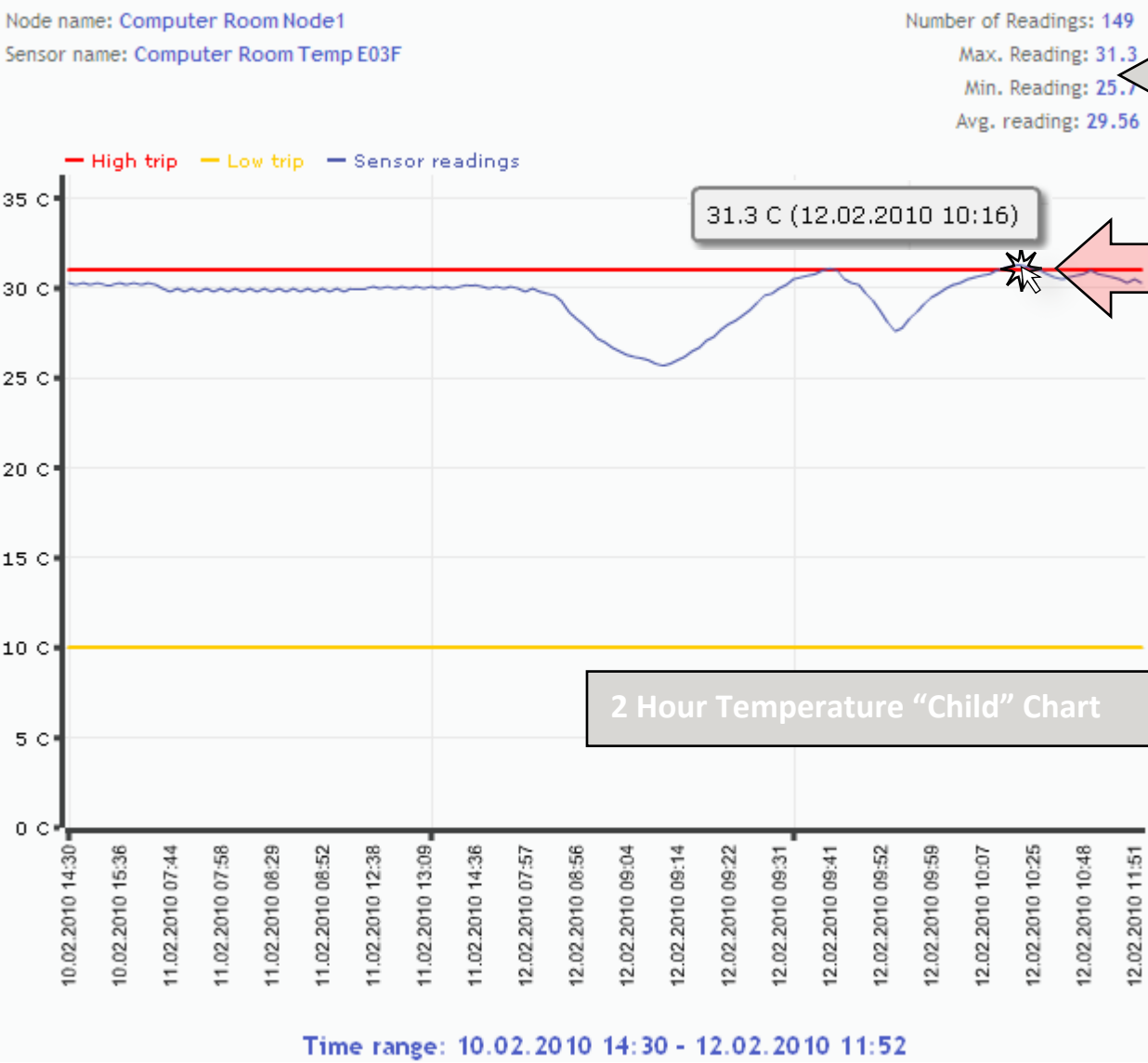
Search period: 1 day 2 days 3 days 4 days 5 days 6 days 7 days **Search Period**

February, 2010							
Today							
wk	Mon	Tue	Wed	Thu	Fri	Sat	Sun
5	1	2	3	4	5	6	7
6	8	9	10	11	12	13	14
7	15	16	17	18	19	20	21
8	22	23	24	25	26	27	28

Time: **Mon, Feb 8**

sensor graphs

Real-time and historical sensor charts



7 Day Temperature Sensor Chart

Click on the sensor reading to drill down to a "child" chart



2 Hour Temperature "Child" Chart